

Bostrom
SEATING

T-SERIES®
WIDE RIDE®

905L/905/910

AIR SUSPENSION SEATS

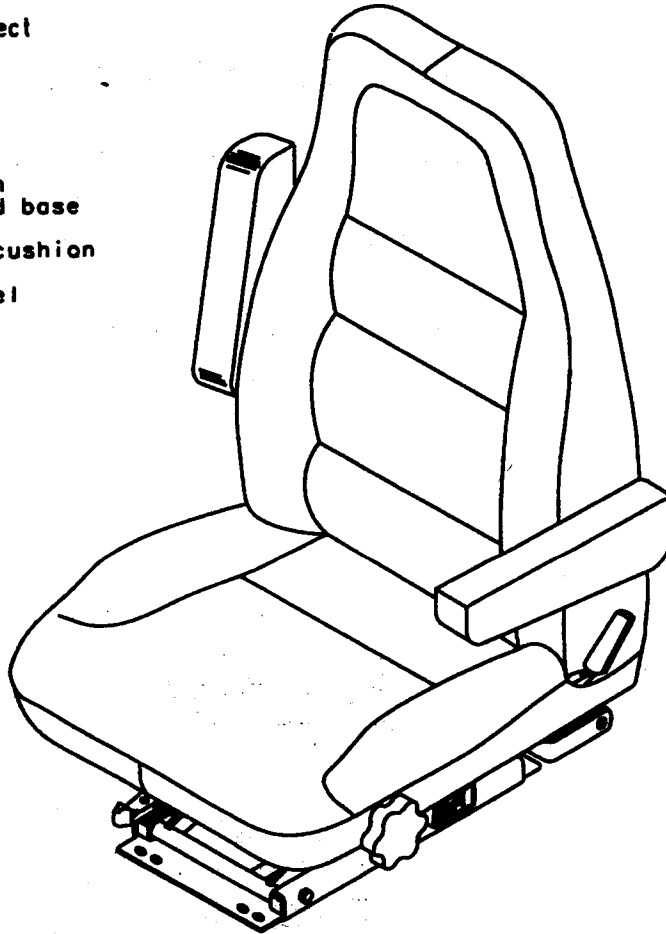
(OPTIONAL) HEADREST, ARMREST(S)

OPERATION AND SERVICE PARTS MANUAL

This seat conforms to
FMSS 207 and 302 in effect
at time of manufacture

STANDARD FEATURES:

- Matching Suspension cover with carpeted base
- 21-inch wide seat cushion
- 9.5 inches of travel
- Two-chamber active air lumbar system



High Back Seat Shown
with Optional Armrests

CATALOG NO.
1202006-001

©1998 BOSTROM SEATING INC.
REV D - 3/2003

OPERATION WARNING

WARNING

SERIOUS INJURY MAY OCCUR IF HEAD CLEARANCE IS NOT ADEQUATE. BEFORE DRIVING OR RIDING IN VEHICLE, ENSURE THAT THERE IS ADEQUATE HEAD CLEARANCE AT MAXIMUM UPWARD TRAVEL OF SEAT. SEE OPERATION MANUAL.

To check for adequate head clearance, sit in the seat and slowly raise it to its maximum upward position (see Comfort Adjustments).

SEAT BELTS SHOULD BE WORN AT ALL TIMES WHEN OPERATING THE VEHICLE.

Federal Motor Vehicle Safety Standard

This seat conforms to Federal Motor Vehicle Safety Standards (FMVSS) 207 and 302 in effect on the date of manufacture.

It is the responsibility of the installer to ensure that proper seat fastening hardware and seat belt anchorages (seat belt and tether belt system) are used in accordance with FMVSS 209 and 210.

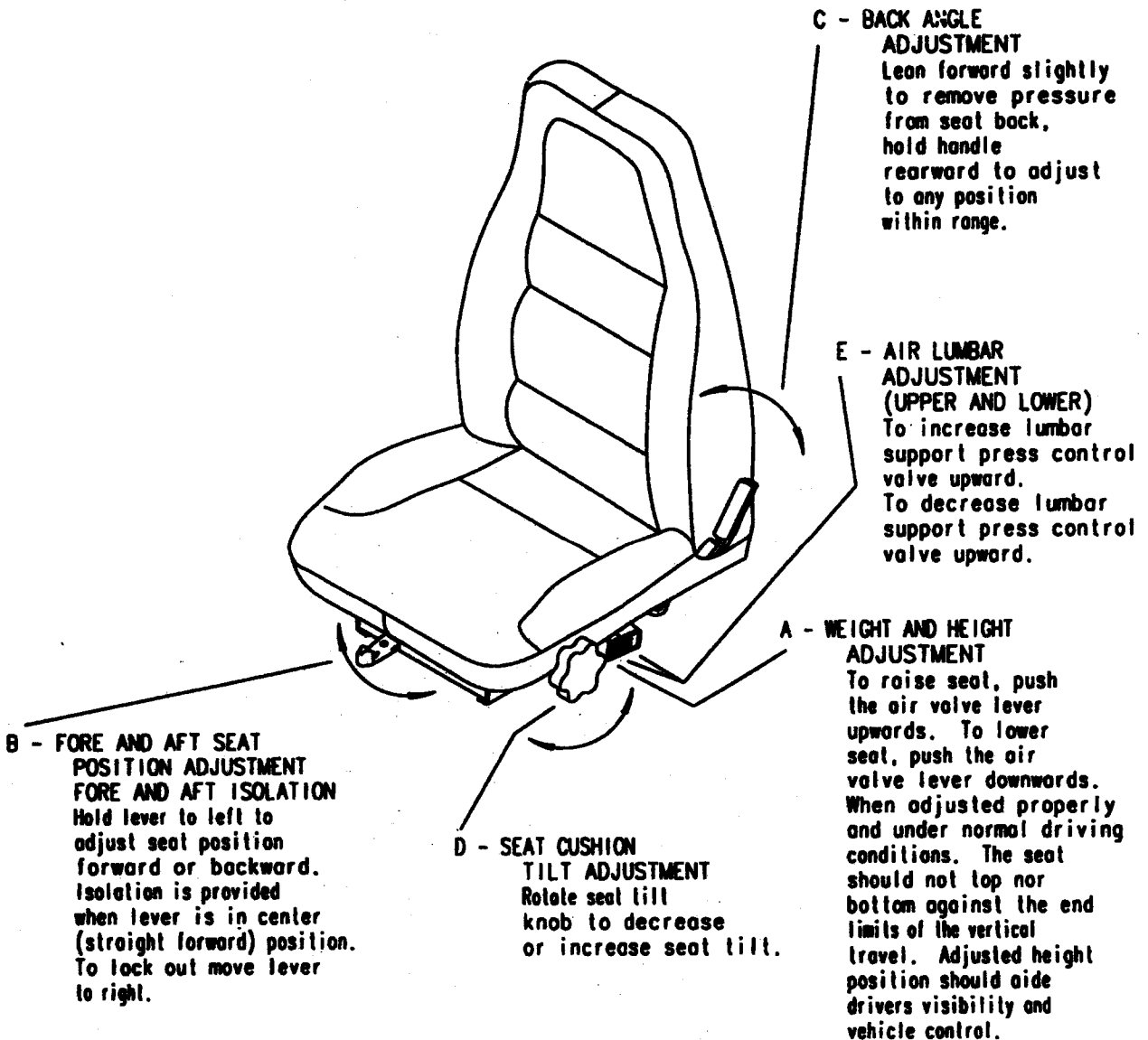
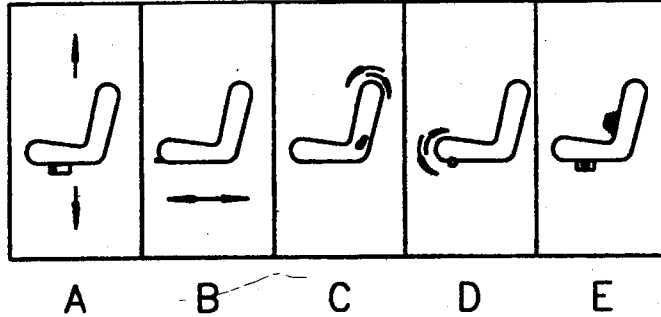
To achieve compliance with FMVSS 207, use only high strength fasteners and heavy duty washers when installing seat assembly.

Bostrom
SEATING

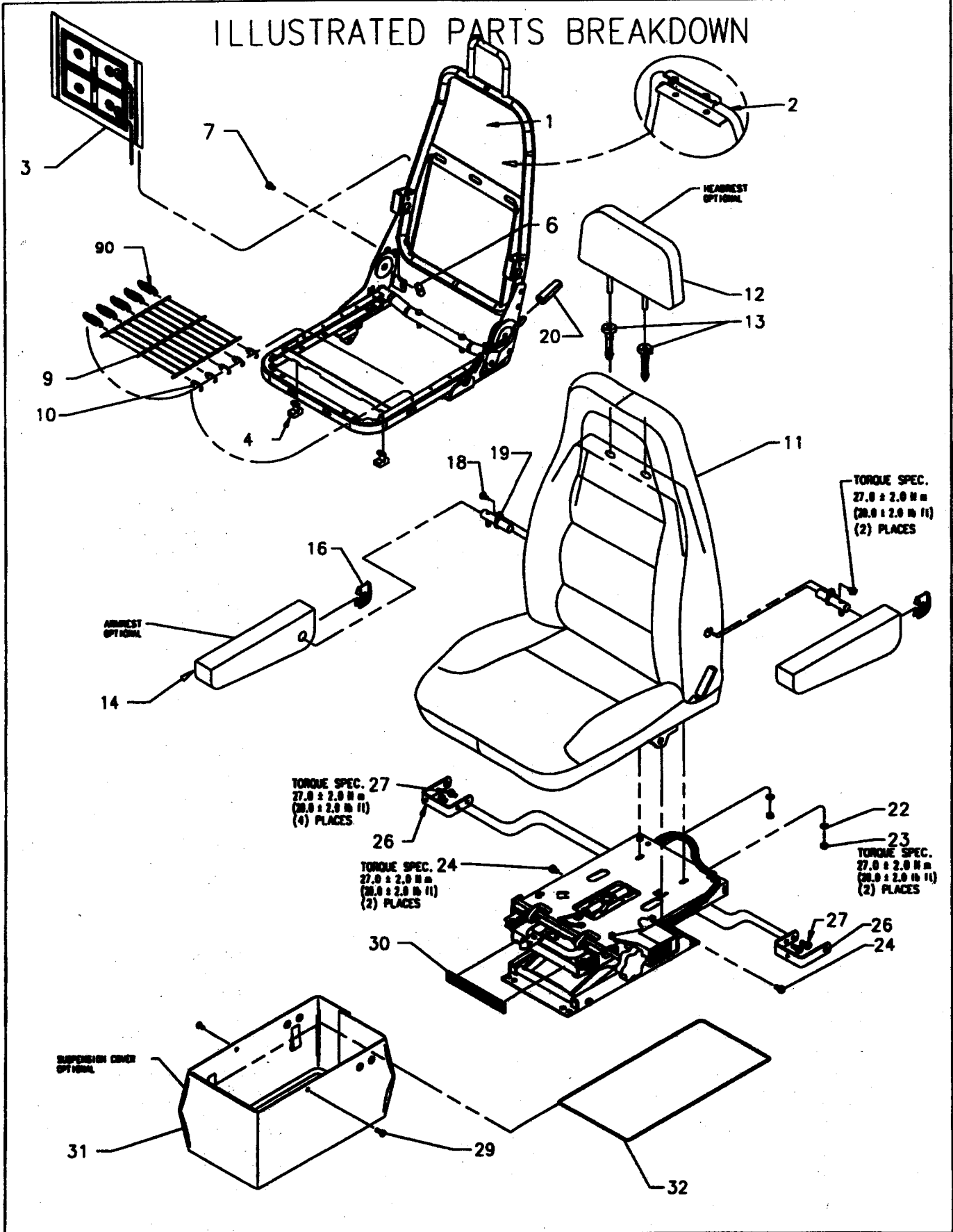
Vigo Road
P.O. Box 566
Piedmont, AL 36272
(256) 447-9051
www.bostromseating.com

COMFORT ADJUSTMENTS

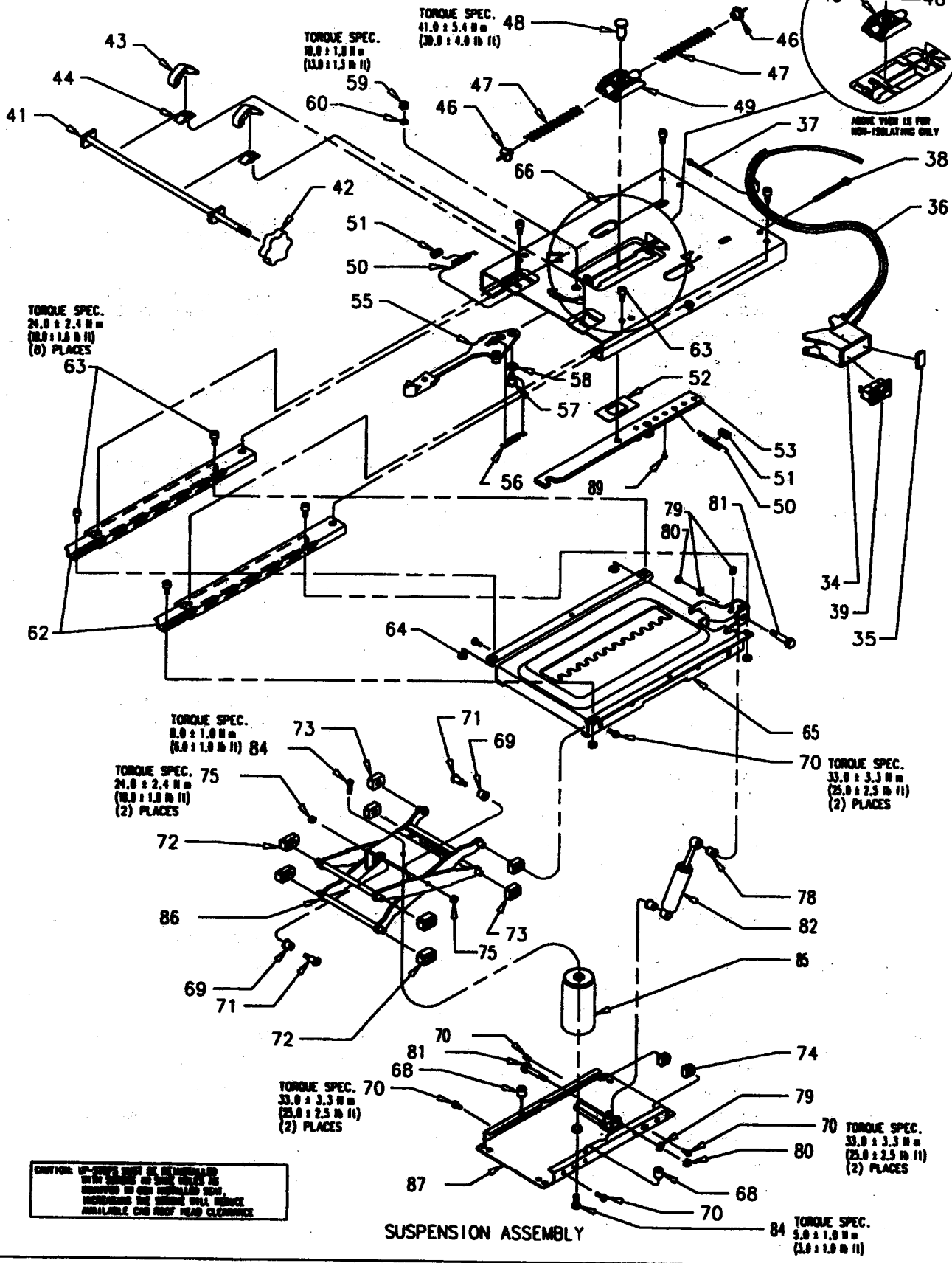
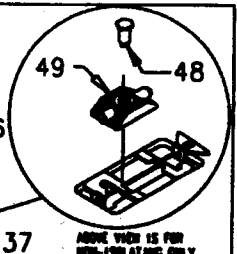
After installation the following comfort adjustments can be made to ensure the best performance.



ILLUSTRATED PARTS BREAKDOWN



ILLUSTRATED PARTS BREAKDOWN



CAUTION: UP-SHOCK MUST BE DEMONSTRATED WITH SHOCK AS SHOWN. SHOCK IS SHIPPED IN AN UNMOUNTED STATE. INCREASING THE SHOCK WILL DEGRADE AVAILABLE CRUISE HEAD CLEARANCE.

SUSPENSION ASSEMBLY

PARTS REPLACEMENT LIST

LOW PROFILE SUSPENSION SEAT

ORDERING INSTRUCTIONS: Order by Part Number, NOT Reference Number.

HOW TO USE: Find the corresponding part that you wish to replace on the exploded view illustration and note its reference number. Refer to list below and record part number, quantity required and description. Order cover pad kits or armrests by color and material.

ORDER FROM: Your truck dealer or Bostrom Authorized Distributor for your area

REF NO	PART NO	DESCRIPTION	QTY	REF NO	PART NO	DESCRIPTION	QTY
1	6202001-001	Frame Assy. - High Back with Air Lumbar		27	*	Screw M8x12MM	4
2	6202009-001	Frame Assy. - Mid Back with Adjustable Headrest		28	**	Suspension Cover Kit, Includes Items 29-32	
3	6222141-001	Air Lumbar Kit	1	29	*	Fastener	2
4	6200408-002	Slide Block Kit	2	30	*	Velcro	1
5	6107030-001	Back Restriction Kit, Includes Items 6 and 7		31	*	Suspension Cover	1
6	*	Stop Block	1	32	*	Wire	1
7	*	Screw 10-32	1	33	6222206-001	Air Lumbar Valve Kit L.H. Actual Kit Not Shown	
8	6222202-001	Pan Support Kit, Includes Items 9, 10 and 90		34	*	Air Valve Module	1
9	*	Flex-o-lator Support (Grid)	1	35	***	No Longer Used ,Plug	1
10	*	Flex-o-lator Clip	5	36	*	Air Line ¼ O.D	
11	**	Upper Seat Assembly or Cover Pad Kits		37	*	3" Wire Tie	2
12	**	Adjustable Headrest Assy. (Optional)		38	*	6" Wire Tie	1
13	6201133-001	Grommet Kit	1 Set	39	*	Air Valve Assembly L.H	1
14	**	Armrest Assembly (Optional)		40	6222071-001	Seat Tilt Rod Kit , Includes Items 41-44	
15	6222159-001	Armrest Insert Kit , Includes Items 16		41	*	Tilt Rod	1
16	*	Armrest Insert	1	42	6200413-002	Tilt Knob	1
17	6222073-001	Armrest Bracket Kit, Includes Items 18 and 19		43	*	Upper Tilt Bracket	2
18	*	Screw 5/16x1/2 Hex Tap	1	44	*	Lower Tilt Bracket	2
19	*	Armrest Bracket	1	45	6222133-001	Isolator Spring Kit , Includes Items 46 - 53	
20	6201619-001	Recliner Handle	1	46	*	Rubber Bumper	2
21	6222007-001	Fastener Mounting Kit , Includes Items 22-24		47	*	Isolator Spring	2
22	*	Flat Washer	2	48	*	Shoulder Bolt M10 x 1.50	1
23	*	Nut M8x1.25	2	49	*	Pivot Block Assy.	1
24	*	Shoulder Bolt M8	2	50	*	Latch Spring	2
25	6222005-001	ICP Bracket Kit , Includes Items 26 and 27		51	***	No Longer Used, Split Loom	2
26	*	ICP Bracket	2	52	*	Spacer	1

PARTS REPLACEMENT LIST LOW PROFILE SUSPENSION SEAT CONTINUED

REF NO	PART NO	DESCRIPTION	QTY	REF NO	PART NO	DESCRIPTION	QTY
53	*	Latch Bar	1	75	*	Nut Hex M8 x 1.25 LK	2
54	6222072-001	Control Handle Assy. Kit Includes Items 55-60		76	6222078-001	Standard Damper Kit, (Optional) Not Shown.	
55	*	Control Handle Assy.	1	77	6222079-001	Heavy Duty Damper Kit	
56	*	Spring Lockout	1	78	*	Bearing Multitube	2
57	*	Shoulder Bolt	1	79	*	Washer Flat	2
58	*	Belleville Washer	1	80	*	Hex Nut	2
59	*	Nut M6x1.25LK	1	81	*	Bolt	2
60	*	Washer	1	82	*	Heavy Duty Damper	1
61	6222165-001	Slide Rail Kit, Includes Items 62-64		83	6222084-001	Air Spring Kit	
62	*	Slide Rail	2	84	*	Screw	2
63	*	Screw Socket HD	8	85	*	Air Spring Assy.	1
64	*	Nut Hex M8	4	86	6222112-001	Lever Assy. Lo-Pro	1
65	6201571-001	Upper Plate Assy.	1	87	6111111-001	Base Assy.	1
66	6202104-002	Isolator Assy. Includes Items 46-53, 55-60, 62-64 and 65		88	6201114-001	Fore/Aft Restrictor Screw M8 (Optional)	1
67	6222076-001	Susp. Hardware Kit, Includes Items 68 - 75		89	*	Restrictor Screw	1
68	*	Rubber Bumper	2		6222207-001	Height Control Valve Onyl, With Out Air Lumbar. Not Shown.	
69	*	Bearing Multitube	2		6222208-001	SC Height Control Valve Not Shown	
70	*	Screw Cap M8x20MM	6		6222206-002	Air Lumbar Valve R.H. Not Shown	
71	*	Shoulder Bolt	2	90	*	Flex-o-lator spring	5
72	*	Bearing Block	4				
73	*	Slide Block	4				
74	*	Stop Block Assy.	2				

* EXCEPT AS NOTED, KITS CONTAIN ALL ITEMS DENOTED BY ASTERISK LISTED BELOW EACH KIT PART NUMBER.

** SEE YOUR DEALER OR BOSTROM AUTHORIZED DISTRIBUTOR FOR UPPER, ARMREST, SUSPENSION COVER OR COVER PAD KIT PART NUMBERS APPROPRIATE FOR YOUR SEAT.

*** ITEM NO LONGER AVAILABLE.

REMOVAL / REASSEMBLY

Suspension Rebuild Bearing/Slide Block Replacement

1. Bleed all air from supply line. Disconnect air supply line to seat. Using air valve, exhaust all air from air spring. Remove complete seat assembly from vehicle.
2. Remove seat/back assembly (11) from suspension per procedures shown.
3. If seat assembly has a suspension cover (31), remove along with fasteners (29), after removing ICP bracket (26) and cap screws (27).
4. Block suspension up with a spacer placed between the base riser (87) and the upper frame (65).
5. Disconnect air line (36) from air spring assembly (85) by pushing in collar of fitting while pulling air line (36) out of fitting.
6. Remove top and bottom screw (84) from air spring (85) and remove air spring assembly from suspension assembly.
7. Remove damper assembly (82) by removing shoulder bolts (81) nuts (80) and washers (79) (see procedure for damper replacement).
8. Remove cap screws (70) from upper front bearing blocks (72) and lower rear stop block assemblies (74).
9. Remove isolator assembly (66) by lifting and sliding it forward until bearing blocks (72) can be removed from cutouts in channels on upper plate (65). Then slide channel rearward until slide blocks (73) can be removed. **Be careful not to pinch fingers in lever assembly.**
10. Remove cap screws (70) from lower front bearing blocks (72) and slide lever assemblies (86) forward until bearing blocks (72) are removed from channel on base (87). Then slide lever assemblies rearward until slide blocks (73) are removed from channel. **Be careful not to pinch fingers in lever assemblies.**
11. Remove shoulder bolts (71) and nuts (75) from pivots of lever assemblies (86) and inspect bearings (69). Replace if worn.
12. Replace bearings (69) at pivots on lever assembly (86) by pushing the old out and pressing in new. Flange of bearings (69) should be on outside of the inner lever assembly .
13. Reassemble reverse order. Torque pivot shoulder bolts nuts (75) to 18.0 +/- 1.8 ft.-lbs.
14. Put new bearing blocks (72) and slide blocks (73) on levers with beveled surfaces outward and slide levers with blocks into channel on base riser (87). Torque screws (70) to 25.0 +/- 2.5 ft.-lbs.
15. After putting bearing blocks (72) and slide blocks (73) on levers, slide isolator assembly (66) over blocks. Line up screws (70) with bearing blocks (72) and torque screws (70) to 25.0 +/- 2.5 ft.-lbs.
16. Manually move suspension up and down to make sure there are no clearance problems. **Be careful not to pinch fingers in levers .**
17. Block up suspension and reinstall air spring assembly (85). Torque upper screw (84) to 6.0 +/- 1.0 ft.-lbs. and lower screw (84) to 3.0 +/- 1.0 ft.-lbs. (see procedure shown for air spring reassembly).
18. Reinstall damper assembly (82) with washer (79) and nuts (80) (see procedure for damper replacement).
19. Reinstall suspension cover (31) and ICP brackets (26) if removed (see step #3).
20. Install seat / back assembly (11).

Seat/Back Assembly (11) Removal/Reassembly

1. Adjust the seat upper to most rearward position and remove two nuts (23) and flat washers (22) from underside of channel assembly (66).
2. Remove two shoulder bolts (24) from channel assembly (66).
3. Reverse procedure to reassemble.

REMOVAL / REASSEMBLY

Air Spring Assembly (85) Removal/Reassembly

Remove complete seat assembly from vehicle.

1. Fill air spring assembly (85) so that seat is at maximum height (see comfort adjustments).
2. Block suspension up with a spacer placed between the base riser (87) and the upper plate (85).
3. Release air pressure from air spring so that seat is supported by spacer (see comfort adjustments).
4. Disconnect air line (54) from air spring assembly (111) by pushing in collar on fitting while pulling air line(54) out of fitting.
5. Remove top screw (109) and bottom screw (110) from air spring (111) and remove air spring assembly from suspension assembly.
6. Position air spring so that fitting at bottom of air spring (111) is toward the front of the seat. Install top screw (109) Torque to 6.0 +/- 1.0 ft. lbs
7. Install bottom screw (110) torque to 3.0 +/- 1.0 ft.-lbs.
8. Reconnect air line (54) to fitting in air spring assembly (111) by pushing air line into fitting .
9. Fill air spring assembly (111) (see comfort adjustment) and remove spacer block.

Damper Replacement (85)

Seat need not be removed from truck.

1. Be sure suspension is at maximum height. Add air if needed (see comfort adjustment).
2. Move channel assembly (66) to full frontward position to gain working room.
3. Remove shoulder bolts (81) and washers(79) and hex nuts (80).
4. Remove damper assembly (85)
5. Install new damper with flanges of bearings to the outside of the suspension. Add washers (78) and install shoulder bolts (81) and hex nuts (75).

Slide Rail (62) Replacement

1. Remove seat/back assembly (11). NOTE: See Seat/Back Assembly Removal/Reassembly procedure.
2. Once seat/back is removed, slide channel assembly (66) to the rear. Remove front screws (63) and nuts (64). Carefully, move channel assembly (66) to the front. Remove screws (63) and nuts (64).
3. Remove top screws (63).
4. Remove and install one slide rail (62) at a time.
5. Install new screws (63) and nuts (64).
6. Reassemble seat/back assembly (11).

