

Bostrom®

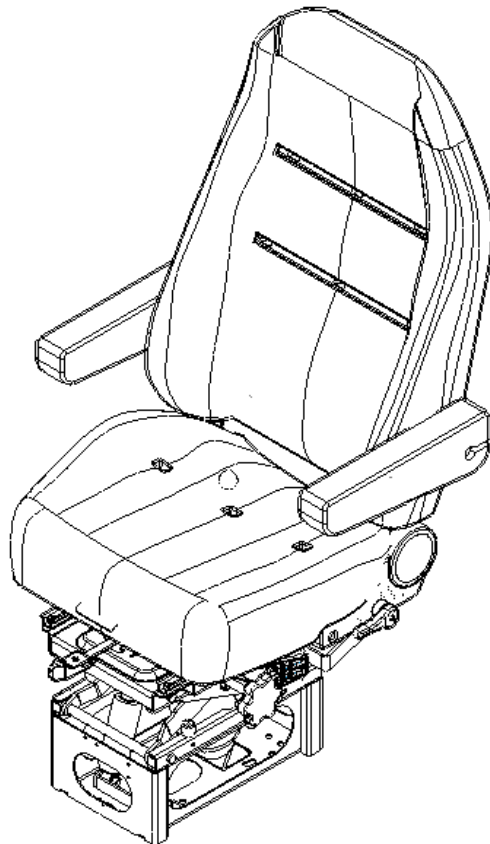
S E A T I N G

PATRIOT SEAT

(OPTIONAL) AIR LUMBAR, DRIVER/PASSENGER SWIVEL, DUAL ARMRESTS,
STOWABLE ARMREST, ACCORDION SUSPENSION COVER

OPERATION AND SERVICE PARTS MANUAL

This seat conforms to
FMVSS 207 and 302 in effect
at time of manufacture



CATALOG NO.

OPERATION WARNING

WARNING

SERIOUS INJURY MAY OCCUR IF HEAD CLEARANCE IS NOT ADEQUATE. BEFORE DRIVING OR RIDING IN VEHICLE, ENSURE THAT THERE IS ADEQUATE HEAD CLEARANCE AT THE MAXIMUM UPWARD TRAVEL OF SEAT. SEE OPERATION MANUAL.

To check for adequate head clearance, sit in the seat and slowly raise it to its maximum upward position (See Comfort Adjustments).

SEAT BELTS SHOULD BE WORN AT ALL TIMES WHEN OPERATING THE VEHICLE.

Federal Motor Vehicle Safety Standard

This seat conforms to Federal Motor Vehicle Safety Standards (FMVSS) 207 and 302 in effect on the date of manufacture.

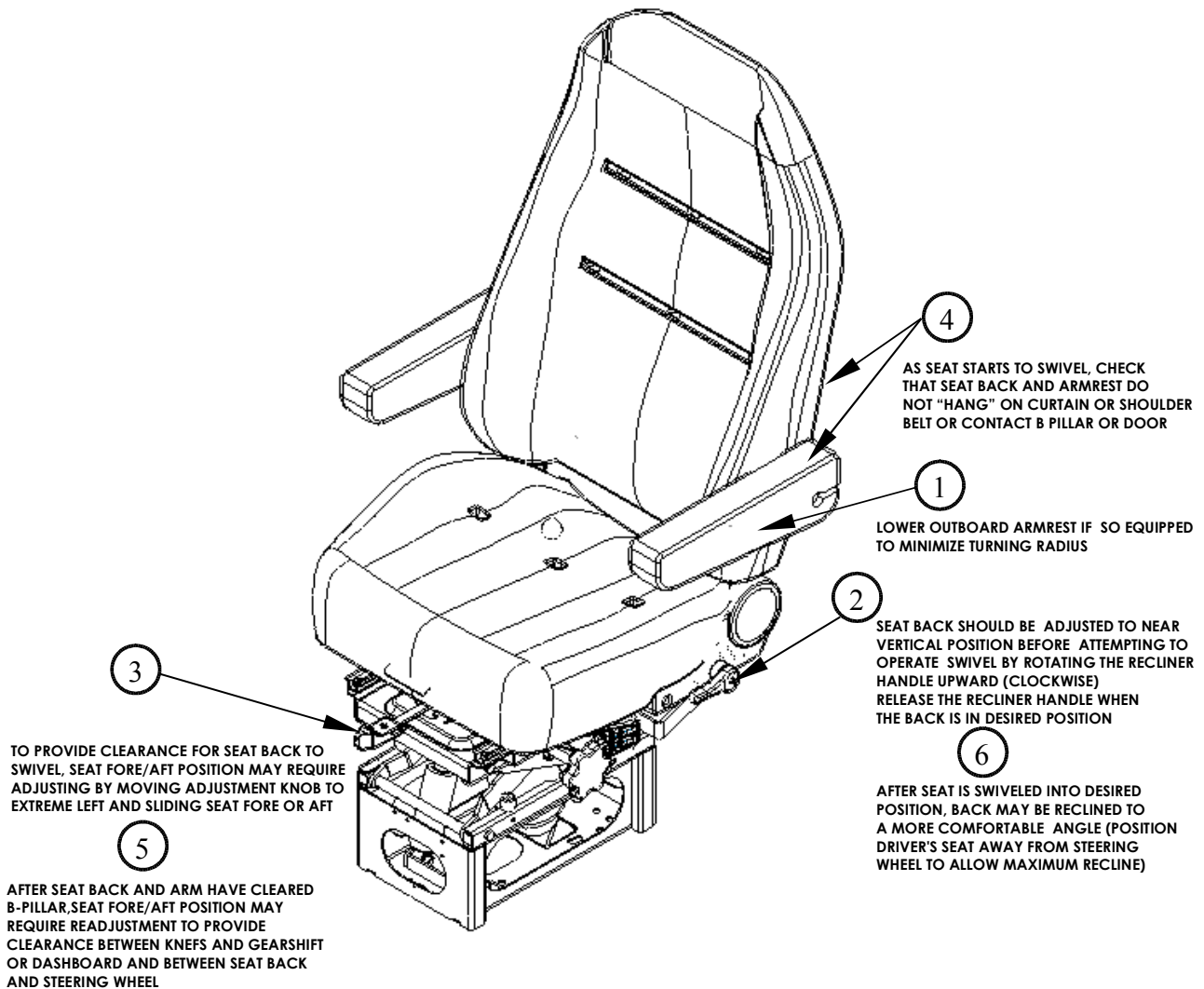
It is the responsibility of the installer to ensure that the proper seat fastening hardware and seat belt anchorages (seat belt and tether belt system) are used in accordance with FMVSS 209 and 210.

To achieve compliance with FMVSS 207, use only high strength fasteners and heavy duty washers or high strength flange head bolts when installing the seat assembly.

BOSTROM PATRIOT SEAT

SEAT SWIVEL OPERATION

▲ WARNING THE SWIVEL FEATURE OF THIS SEAT IS INTENDED SOLELY FOR OPERATION WHEN THE VEHICLE IS NOT IN MOTION. WHEN THE VEHICLE IS MOVING, THE SEAT MUST BE LOCKED IN THE FORWARD FACING POSITION AND THE SEAT BELT WORN FOR MAXIMUM OCCUPANT SAFETY



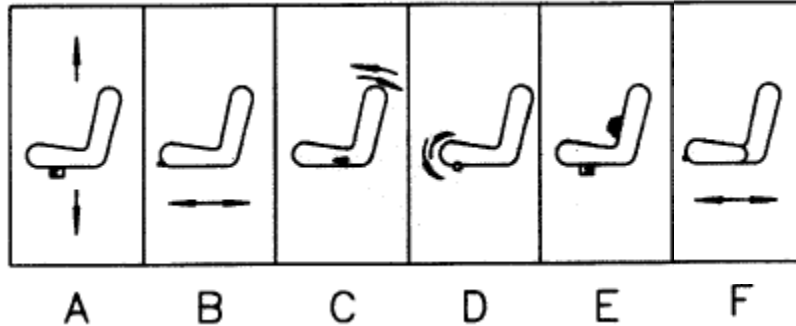
SWIVEL OPERATION SEQUENCE SUMMARY

(SEE DETAILS ABOVE)

- ① OUTBOARD ARMREST DOWN
- ② BACK NEAR VERTICAL POSITION
- ③ ADJUST FORE/AFT AS REQUIRED
- ④ CHECK ARM AND BACK CLEARANCE
- ⑤ ⑥ READJUST SEAT AND BACK AS DESIRED

COMFORT ADJUSTMENTS

After installation the following comfort adjustments can be made to ensure the best performance.



B - FORE AND AFT SEAT POSITION ADJUSTMENT /OR FORE AND AFT ISOLATION
 hold lever to left to adjust seat position forward or backward. Isolation is provided when lever is in center (straight forward) position. To lock out, move lever to right.

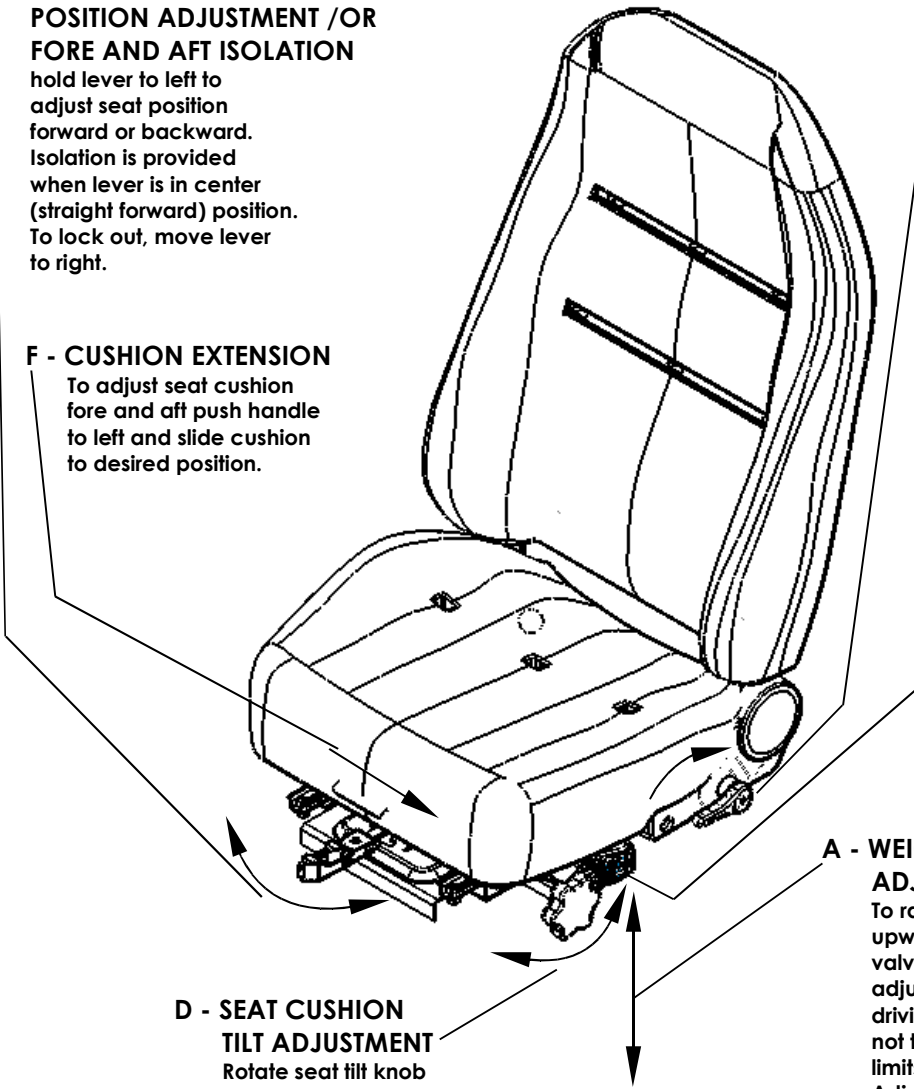
C - BACK ANGLE ADJUSTMENT
 Lean forward slightly to remove pressure from seat back, pull handle upward to adjust to any position within range.

F - CUSHION EXTENSION
 To adjust seat cushion fore and aft push handle to left and slide cushion to desired position.

E - OPTIONAL AIR LUMBAR ADJUSTMENT (UPPER AND LOWER)
 To increase lumbar support press control valve forward. To decrease lumbar support press control valve rearward.

D - SEAT CUSHION TILT ADJUSTMENT
 Rotate seat tilt knob to decrease or increase seat tilt.

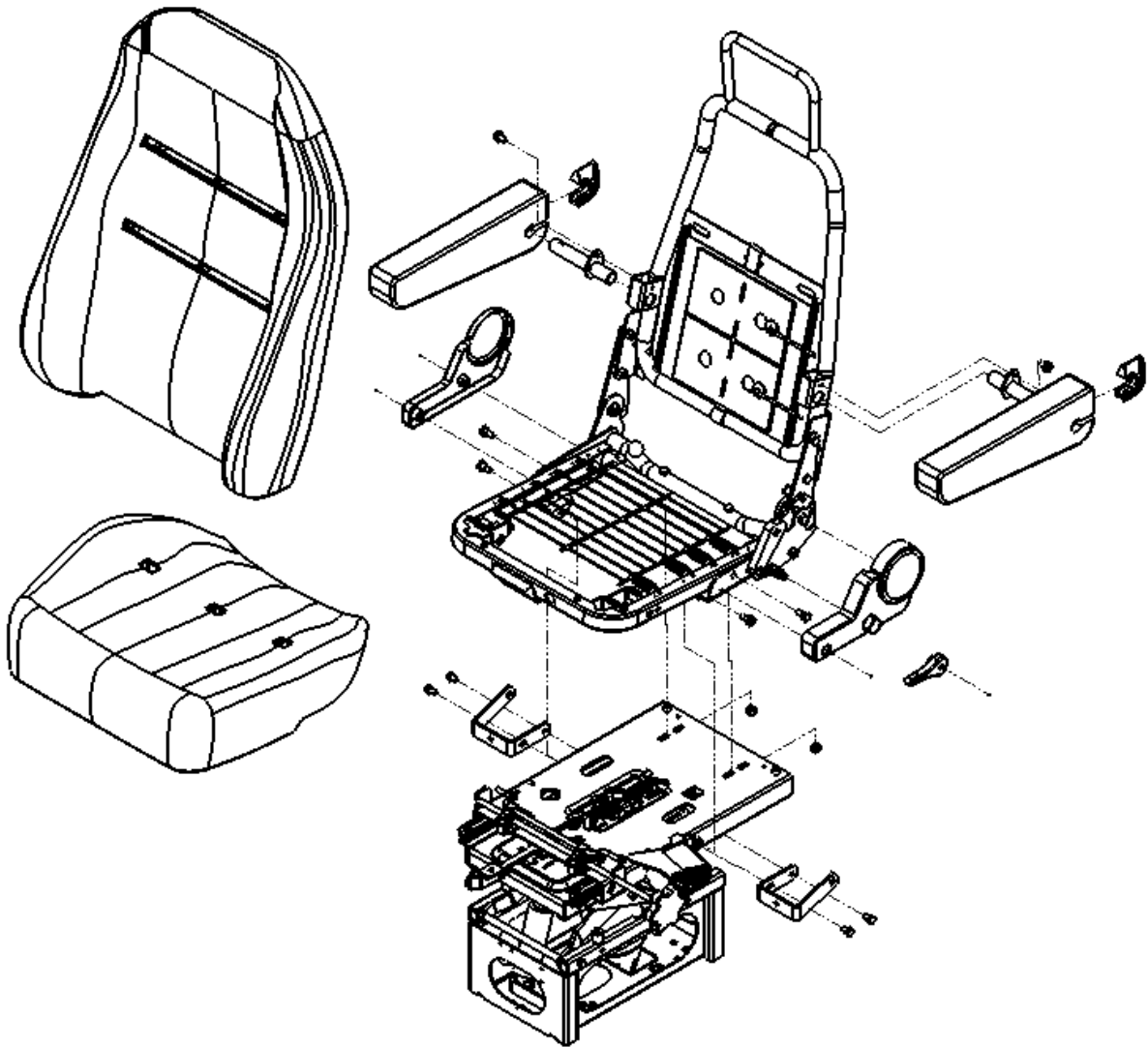
A - WEIGHT AND HEIGHT ADJUSTMENT
 To raise seat, push the air valve lever upwards. To lower seat, push the air valve lever downwards. When adjusted properly and under normal driving conditions, the seat should not top nor bottom against the end limits of the vertical travel. Adjusted height position should aid drivers visibility and vehicle control.



ILLUSTRATED PARTS BREAKDOWN

SUSPENSION WITH HEAVY DUTY DAMPER AND UPPER WITH AIR LUMBAR

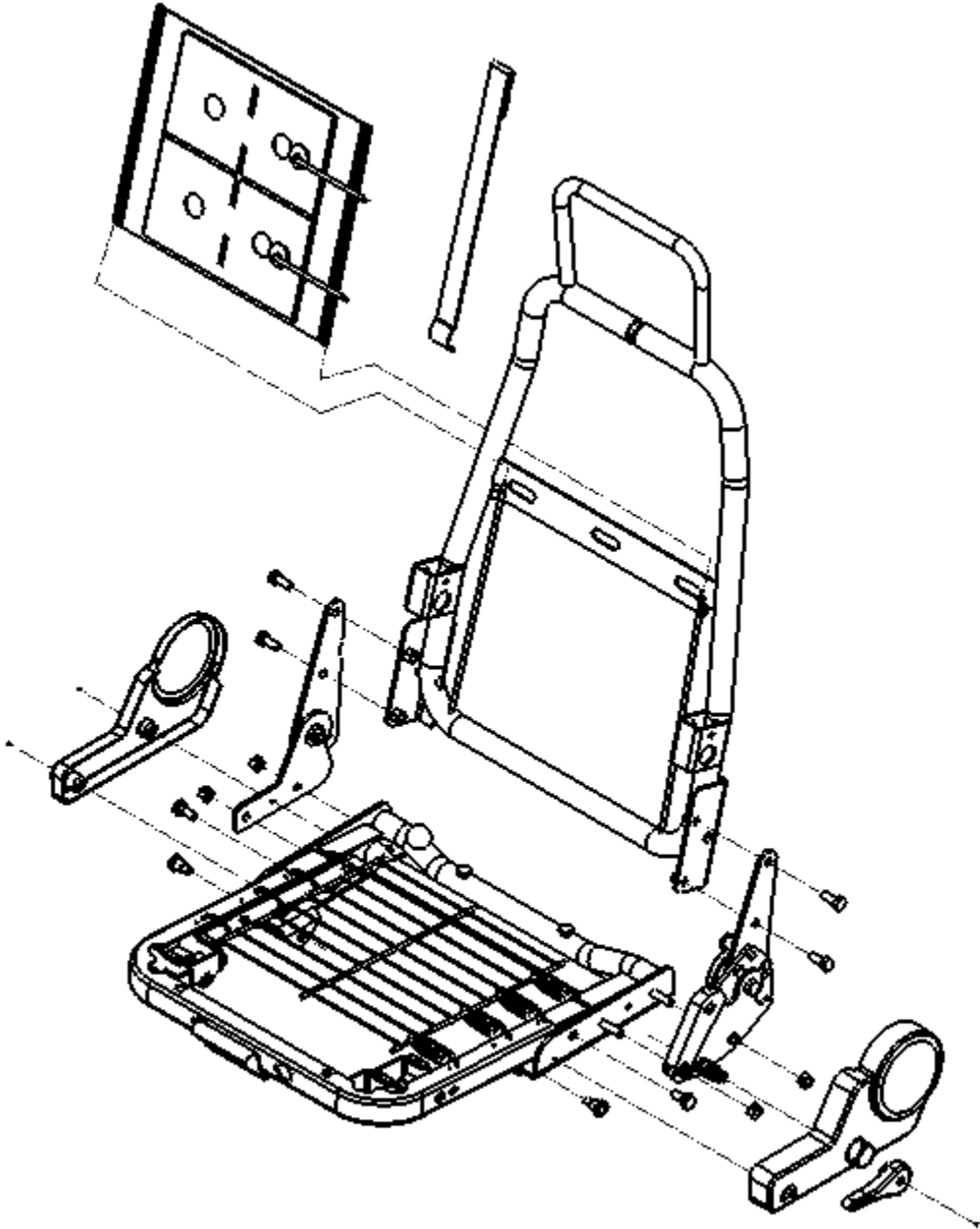
ITEM(S)	TORQUE SPEC.



ILLUSTRATED PARTS BREAKDOWN

FRAME ASSEMBLY WITH AIR LUMBAR

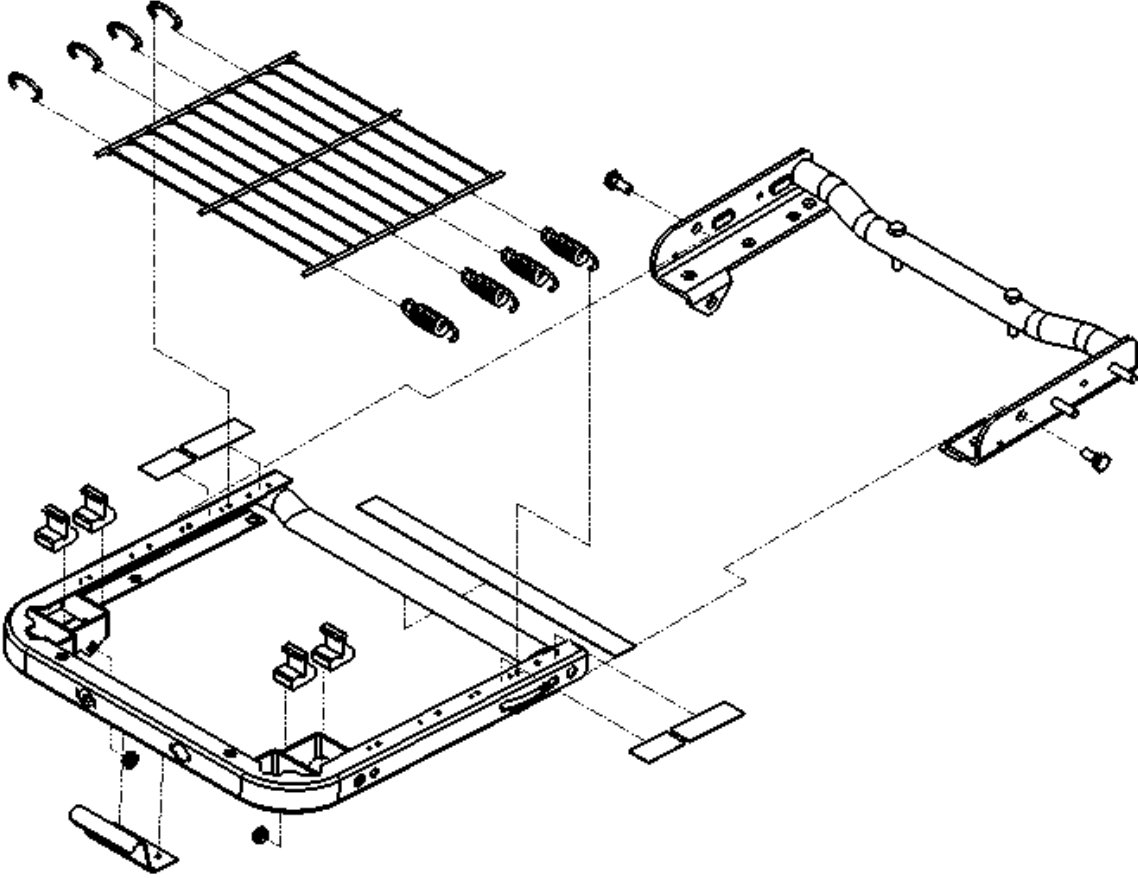
ITEM(S)	TORQUE SPEC.



ILLUSTRATED PARTS BREAKDOWN

ADJUSTABLE SEAT CUSHION FRAME ASSEMBLY

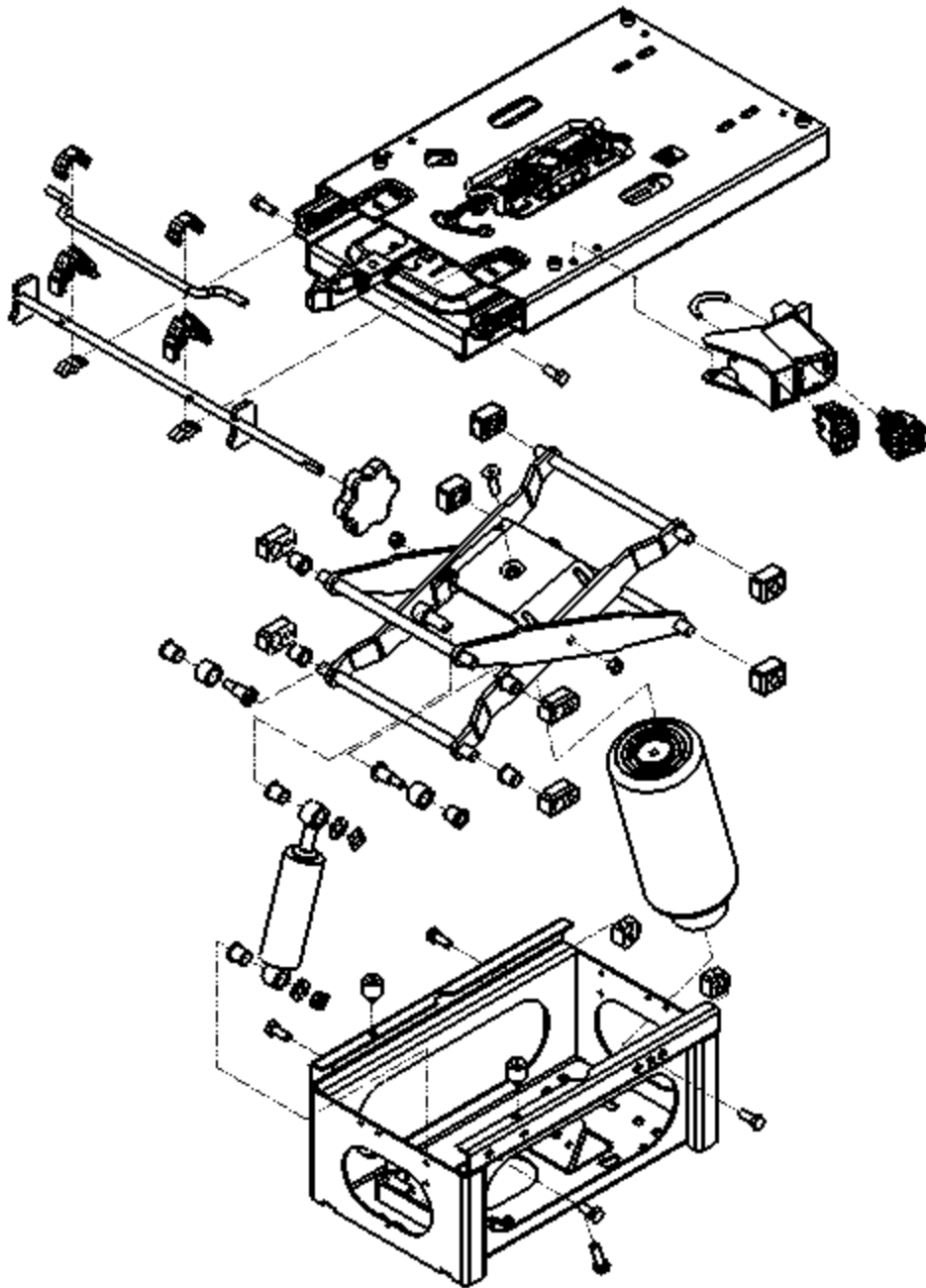
ITEM(S)	TORQUE SPEC.



ILLUSTRATED PARTS BREAKDOWN

HEAVY DUTY DAMPER AND AIR LUMBAR MODULE

ITEM(S)	TORQUE SPEC.



ILLUSTRATED PARTS BREAKDOWN

ISOLATOR ASSEMBLY

ITEM(S)	TORQUE SPEC.

